

MONTHLY MEMBERSHIP PROGRESS REPORT

District 11 A2

Results as of: 6/30/2024

GMT:

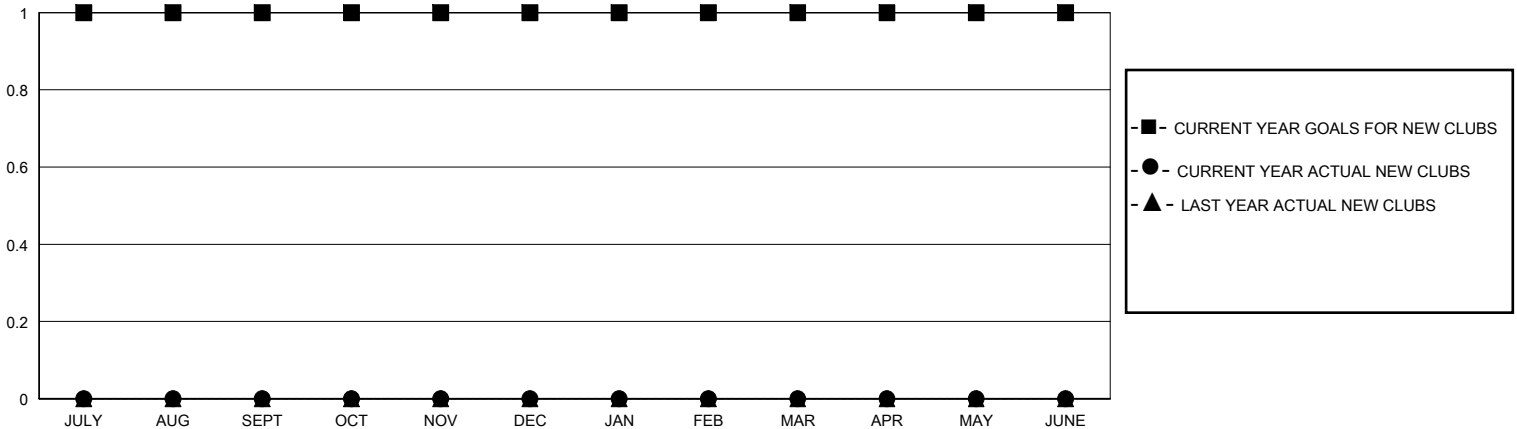
LOCATION MICHIGAN

GMT CA

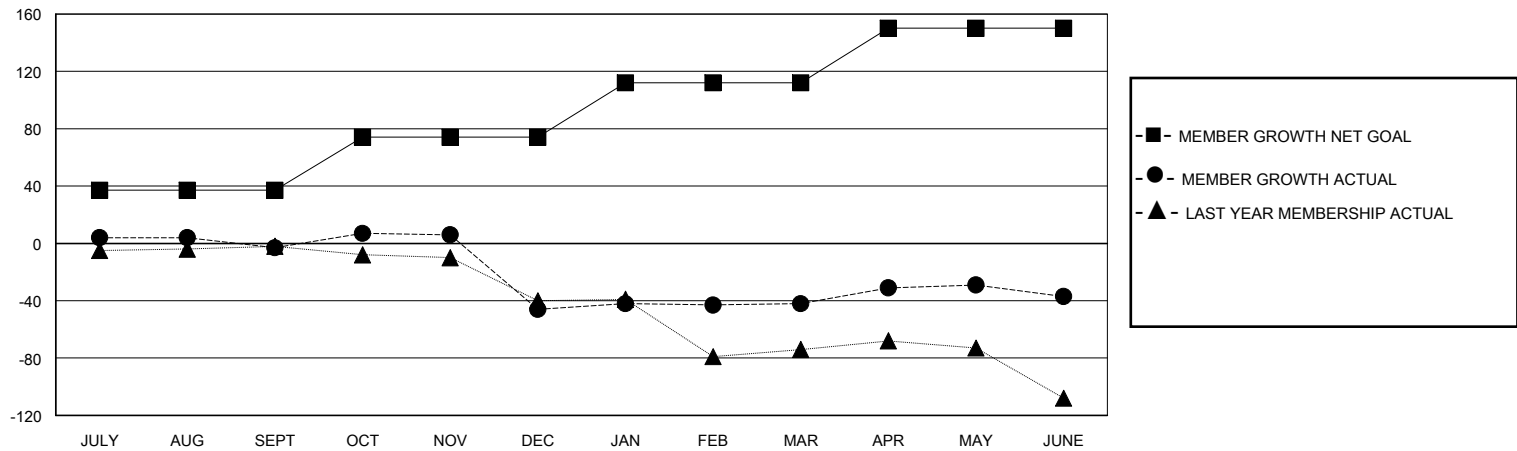
Clubs			
RESULTS FOR 2023-2024			
QUARTER	NEW CLUB GOAL	NEW CLUBS	DROPPED CLUBS
JULY/AUG/SEPT	1	0	0
OCT/NOV/DEC	0	0	1
JAN/FEB/MAR	0	0	0
APR/MAY/JUNE	0	0	0

Members			
RESULTS FOR 2023-2024			
QUARTER	MEMBER GROWTH NET GOAL	MEMBER GROWTH ACTUAL	DROPPED MEMBERS ACTUAL (including transfers)
JULY/AUG/SEPT	37	35	35
OCT/NOV/DEC	37	34	74
JAN/FEB/MAR	38	43	20
APR/MAY/JUNE	38	45	36

GOALS AND ACTUAL NEW CLUBS CUMULATIVE



GOALS AND ACTUAL MEMBERS CUMULATIVE



DROPPED CLUBS: 1	24 CLUBS OF 32 ADDED 1 OR MORE NEW MEMBERS	GENDER DISTRIBUTION MALE 748 (61.01%) FEMALE 478 (38.99%)
DROPPED MEMBERS DECEASED 37 CLUB CANCELLED 16 OTHER 112 TOTAL 165	CLICK HERE FOR CUMULATIVE MEMBERSHIP DATA	TOTAL FAMILY UNIT MEMBERS 198 FAMILY MEMBERS PAYING HALF DUES 104